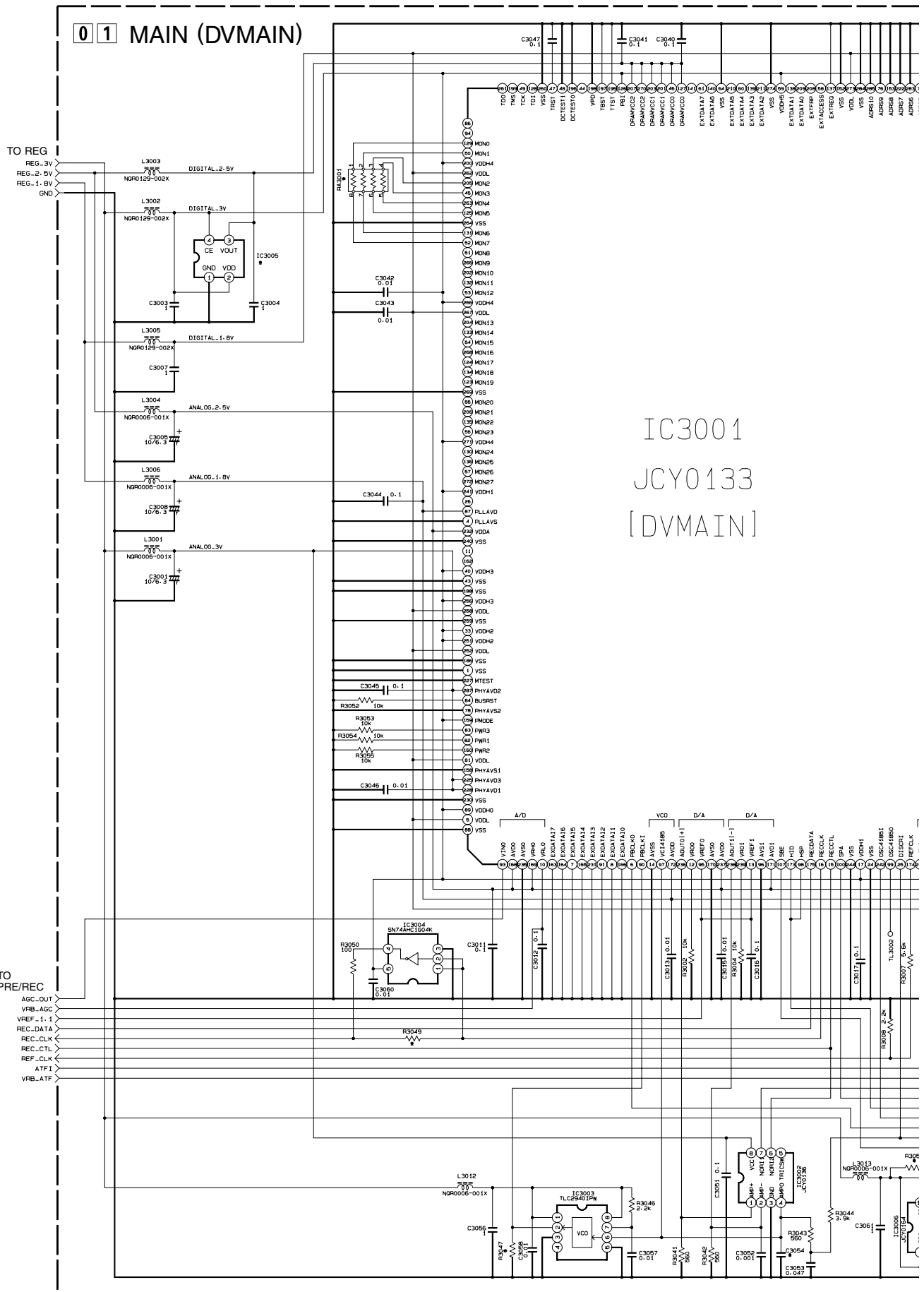


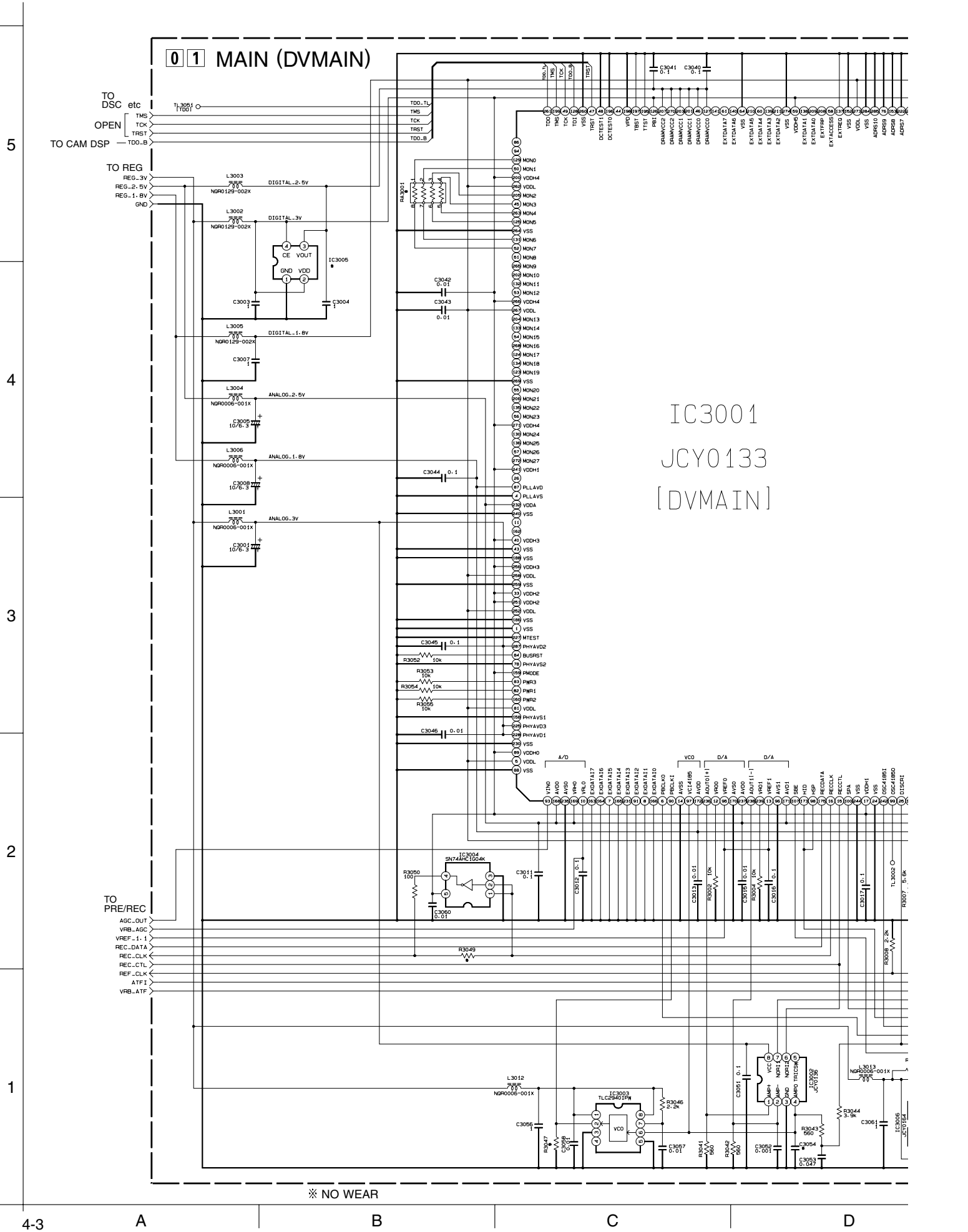
SECTION 4 CHARTS AND DIAGRAMS

4.1 DVMAIN SCHEMATIC DIAGRAM [GR-DVM55UM]



※ NO WEAR

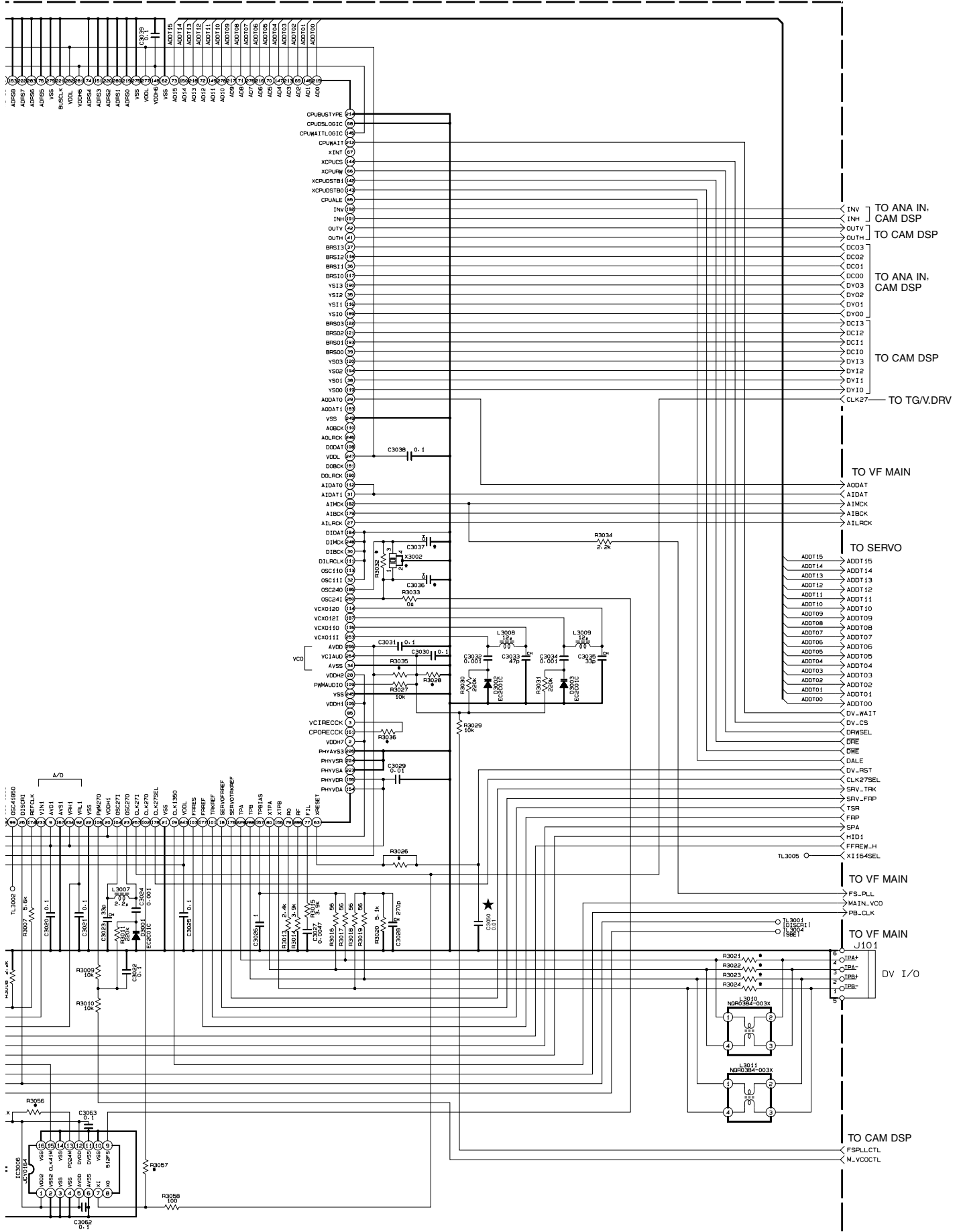
4.2 DVMAIN SCHEMATIC DIAGRAM [GR-DVM75UM]



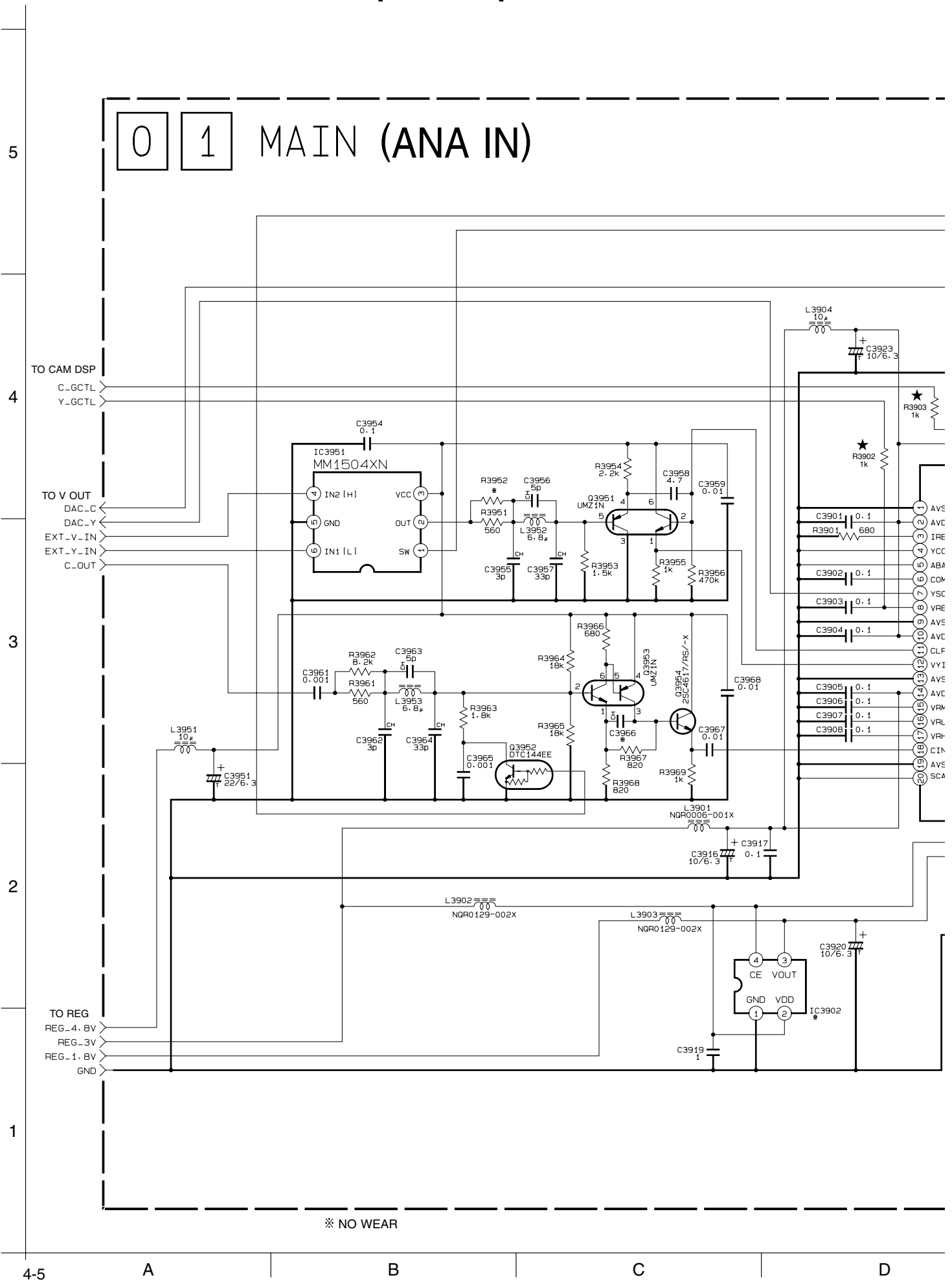
IC3001
JCY0133
[DVMAIN]

※ NO WEAR

- NOTE 1. How to find the page showing the continuative schematic diagram.
 Example) To SYSCON : Refer to the GR-DVM55U,DVM75U service manual (No. 86615).
 To SYSCON : Refer to this service manual.
2. The mark ★ means modified points.
3. When ordering parts, be sure to order according to the Part Number indicated in the Parts List.



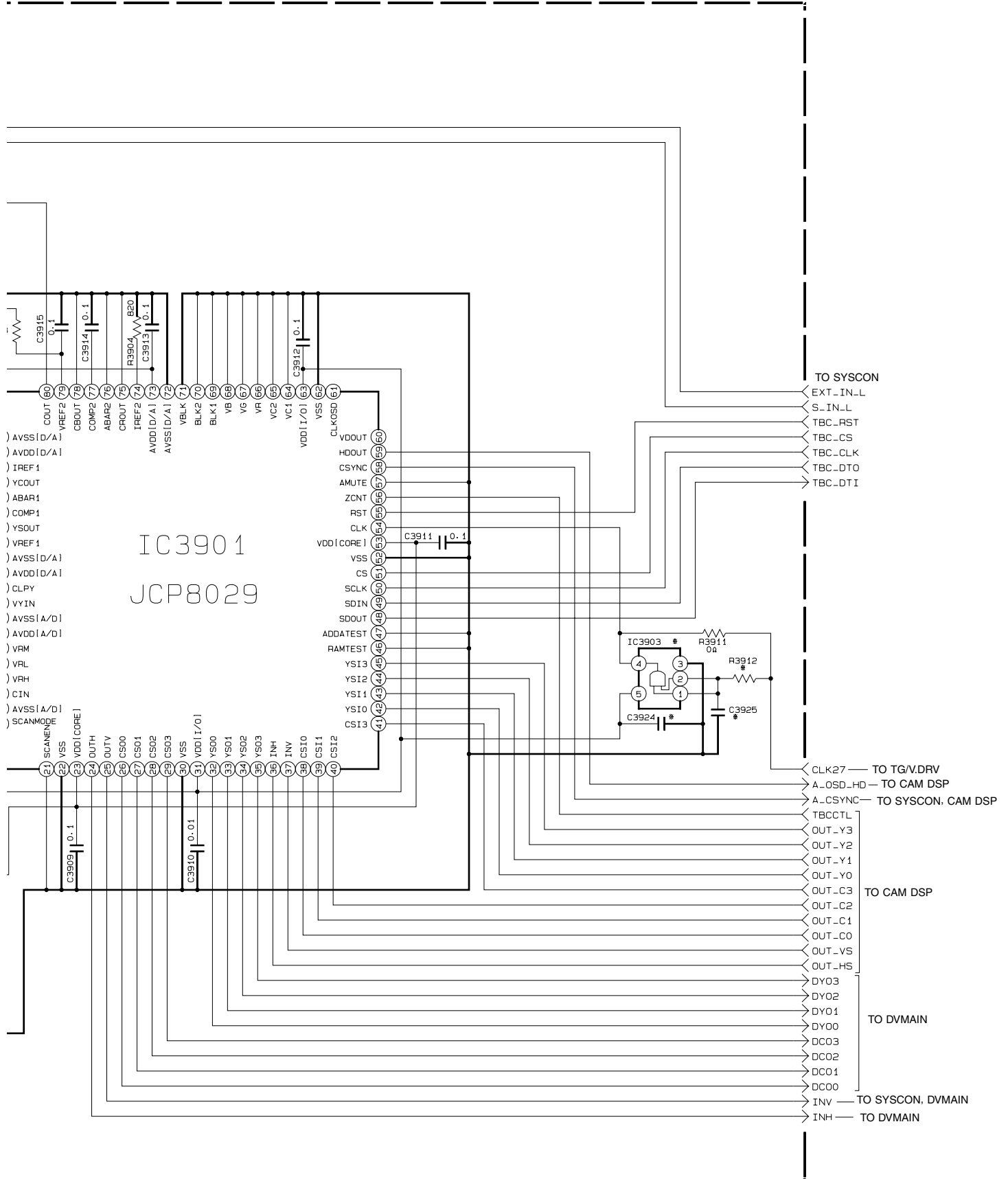
4.3 ANA IN SCHEMATIC DIAGRAM [GR-DVM75UM]



NOTE 1. How to find the page showing the continuative schematic diagram.
 Example) To SYSCON : Refer to the GR-DVM55U,DVM75U service manual (No. 86615).
 To SYSCON : Refer to this service manual.

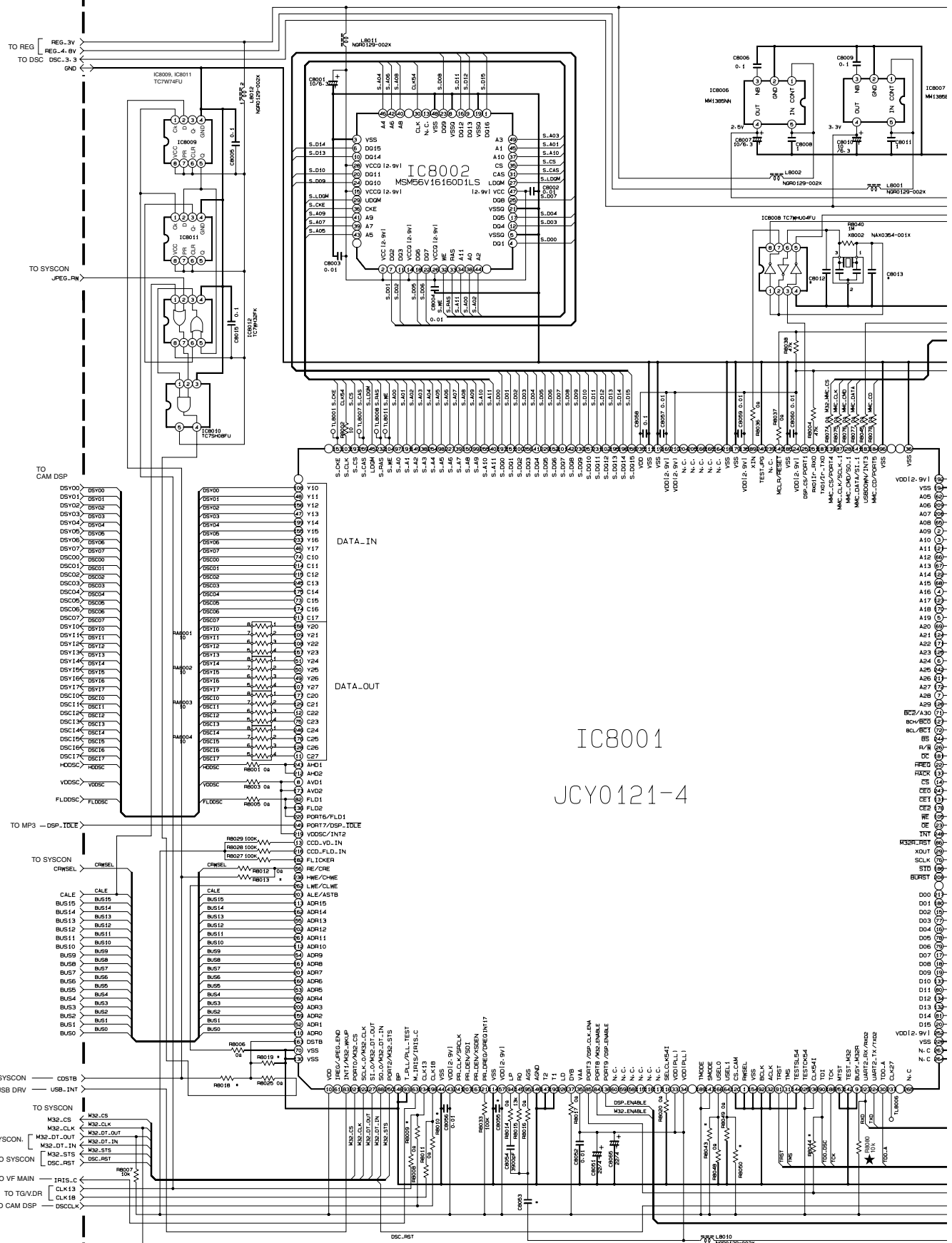
2. The mark ★ means modified points.

3. When ordering parts, be sure to order according to the Part Number indicated in the Parts List.



4.4 DSC SCHEMATIC DIAGRAM [GR-DVM75UM]

01 MAIN (DSC)



※ NO WEAR

5

4

3

2

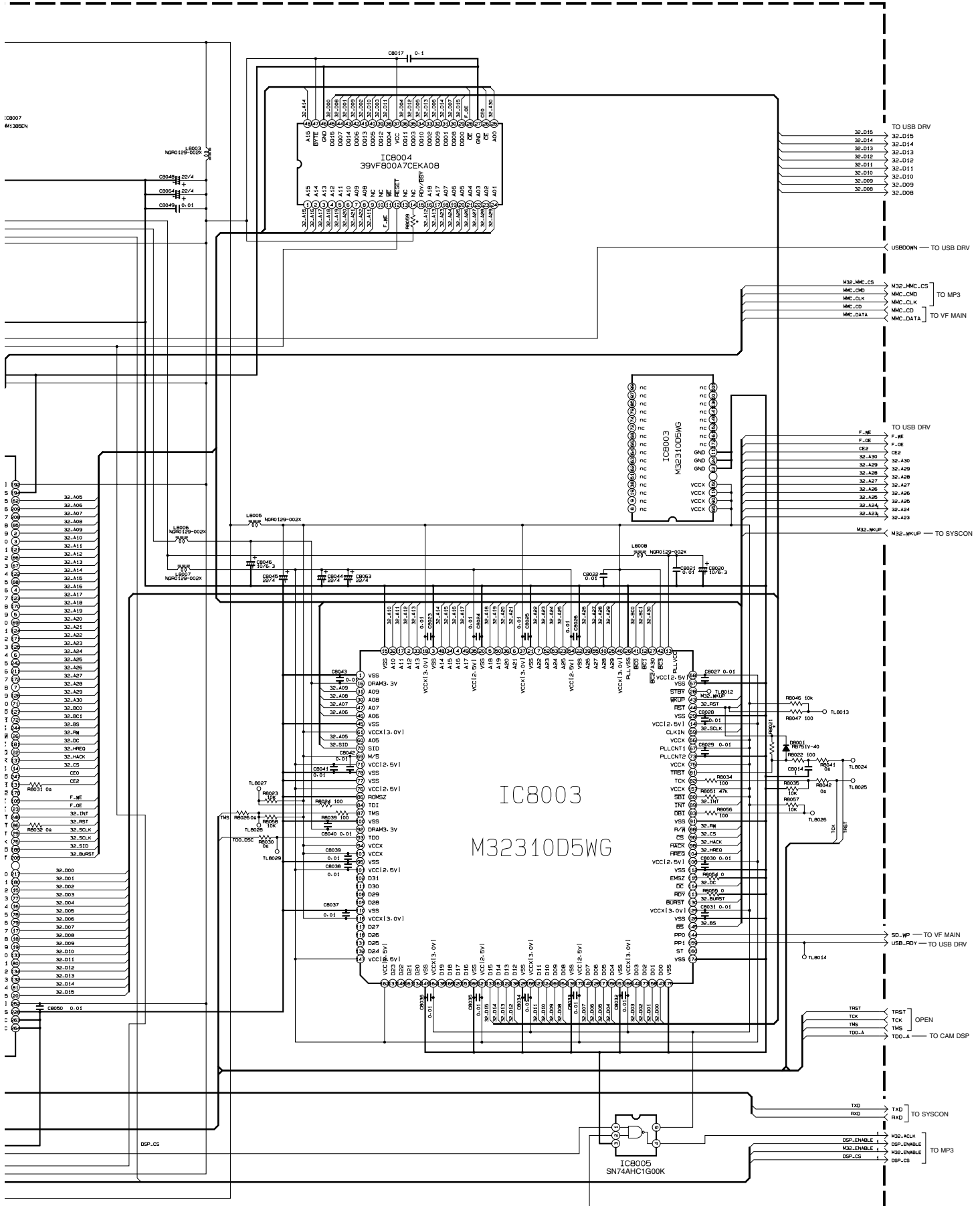
1

NOTE 1. How to find the page showing the continuative schematic diagram.

Example) To SYSCON : Refer to the GR-DVM55U, DVM75U service manual (No. 86615).
To SYSCON : Refer to this service manual.

2. The mark ★ means modified points.

3. When ordering parts, be sure to order according to the Part Number indicated in the Parts List.

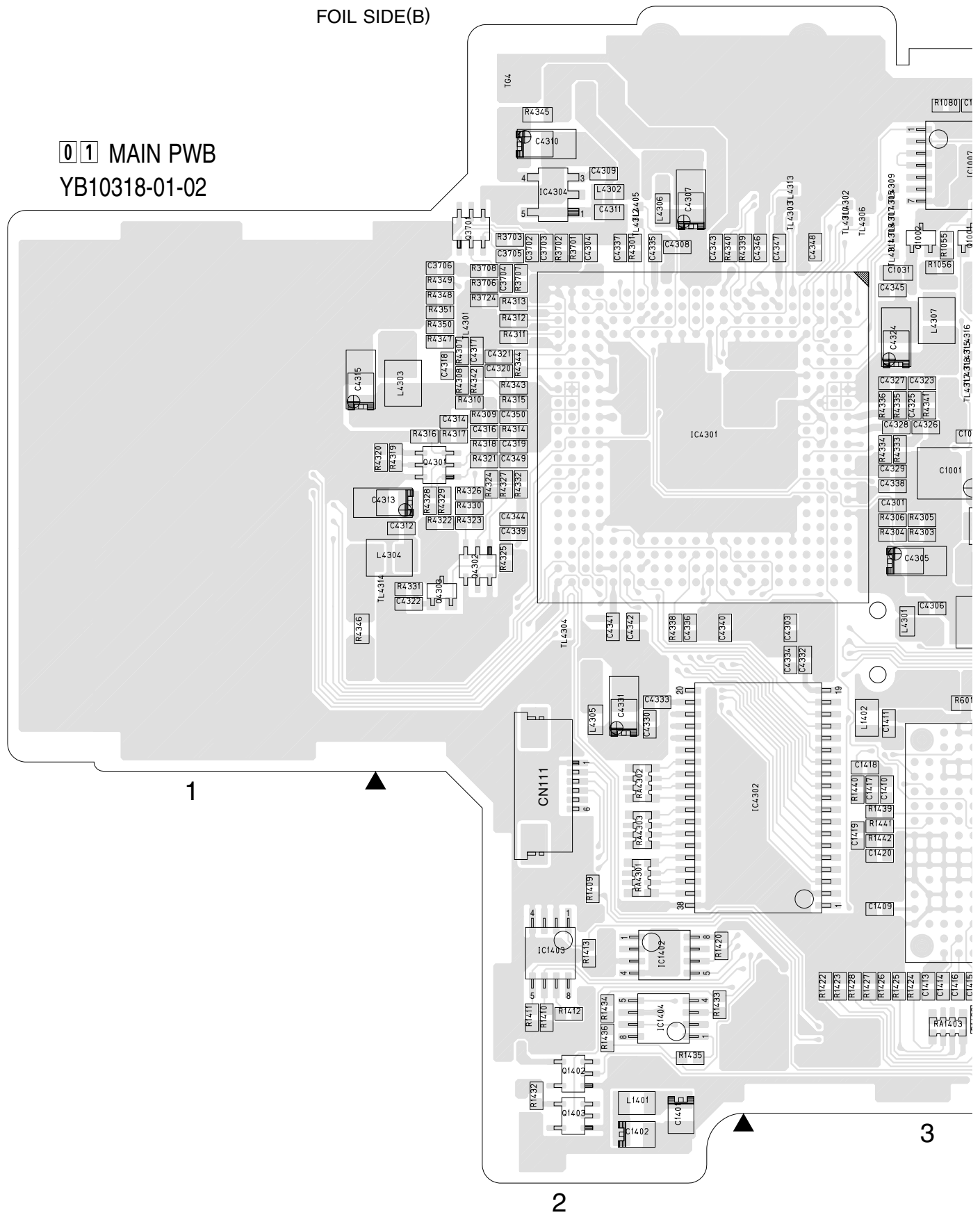


y10204001a_rev0.1

4.5 MAIN CIRCUIT BOARD [GR-DVM55UM]

FOIL SIDE(B)

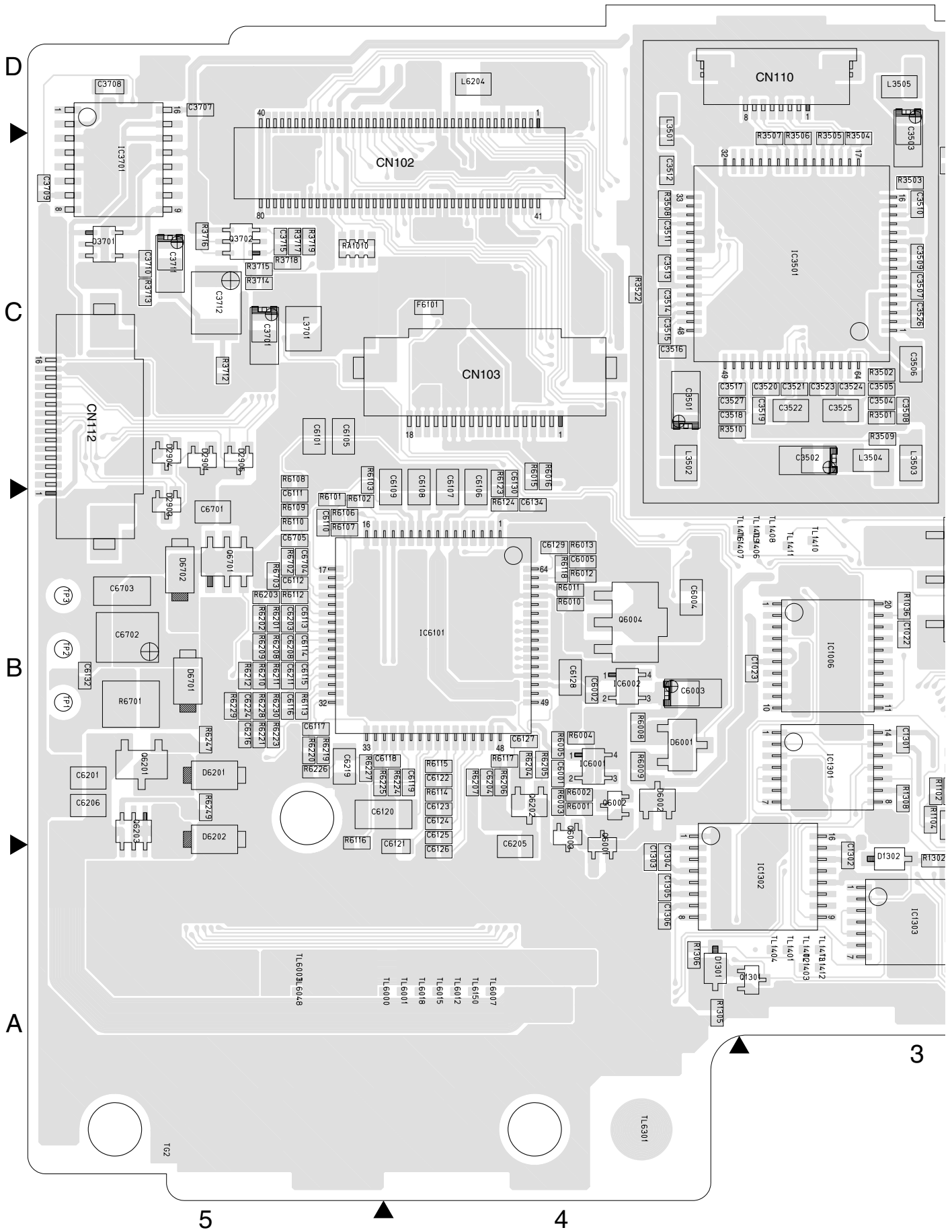
01 MAIN PWB
YB10318-01-02



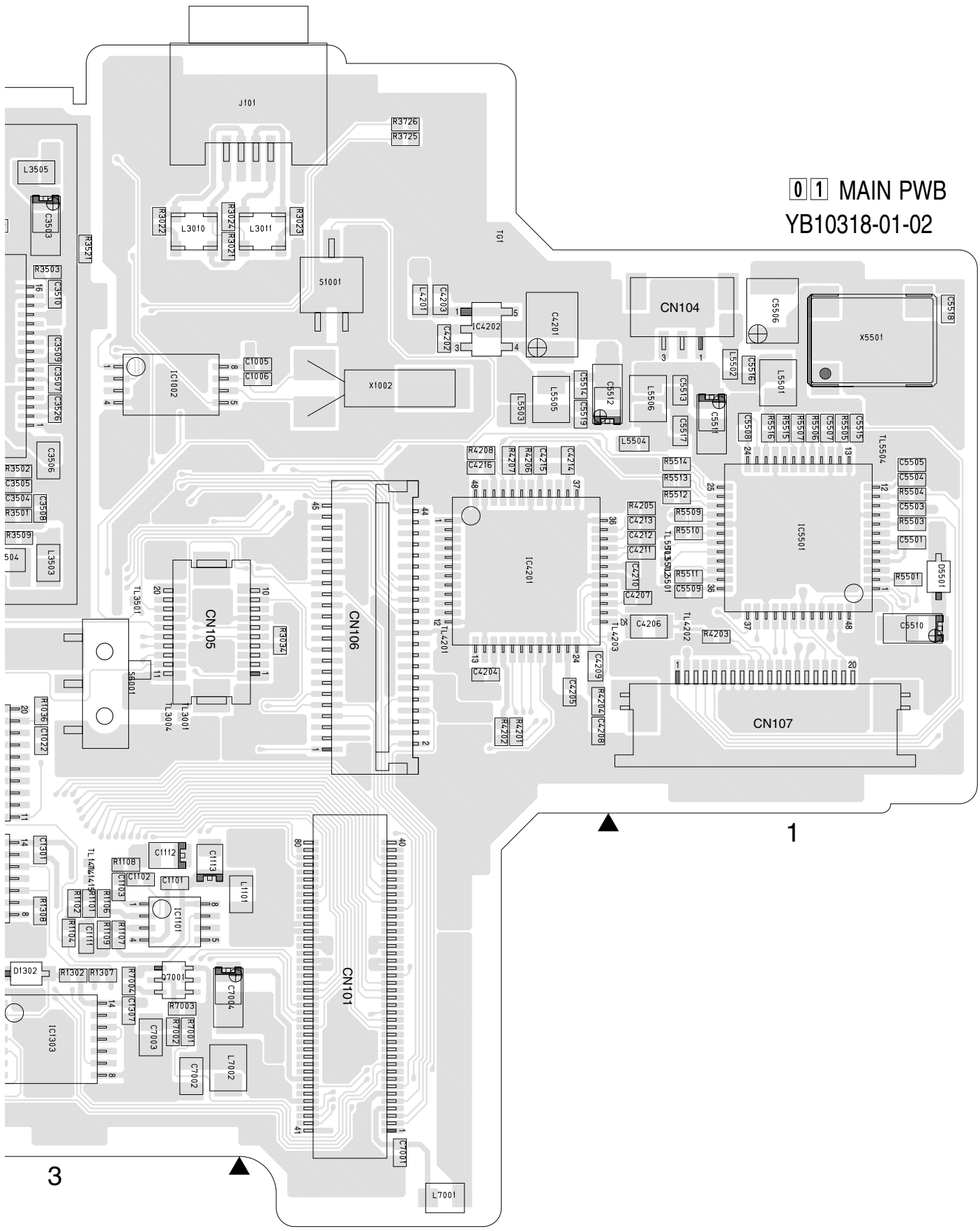
COMPONENT PARTS LOCATION GUIDE <MAIN/YB10318-01-02> (2/2)

REF.NO.	LOCATION		REF.NO.	LOCATION		REF.NO.	LOCATION				
R3509	A	C	3C	R6002	A	C	4B	RA1010	A	C	5C
R3510	A	C	4C	R6003	A	C	4B	RA1401	B	C	3A
R3521	A	C	3C	R6004	A	C	4B	RA1402	B	C	3A
R3522	A	C	4C	R6005	A	C	4B	RA1403	B	C	3A
R3701	B	C	2C	R6008	A	C	4B	RA3001	B	C	4C
R3702	B	C	2C	R6009	A	C	4B	RA4301	B	C	2B
R3703	B	C	2C	R6010	A	C	4B	RA4302	B	C	2B
R3706	B	C	2C	R6011	A	C	4B	RA4303	B	C	2B
R3707	B	C	2C	R6012	A	C	4B	TESTPOINT			
R3708	B	C	2C	R6013	A	C	4B	TP1	A	D	5B
R3712	A	C	5C	R6014	B	C	3B	TP2	A	D	5B
R3713	A	C	5C	R6015	A	C	4C	TP3	A	D	5B
R3714	A	C	5C	R6016	A	C	4C	OTHER			
R3715	A	C	5C	R6101	A	C	5B	F6101	A	C	4C
R3716	A	C	5C	R6102	A	C	5B	J101	A	C	2D
R3717	A	C	5C	R6103	A	C	5C	PC06	A	C	5D
R3718	A	C	5C	R6106	A	C	5B	S1001	A	C	2C
R3719	A	C	5C	R6107	A	C	5B	S6001	A	C	3B
R3723	B	C	4D	R6108	A	C	5C	TL1001	B	C	3C
R3724	B	C	2C	R6109	A	C	5B	TL1002	B	C	3C
R3725	A	C	2D	R6110	A	C	5B	TL1003	B	C	3C
R3726	A	C	2D	R6112	A	C	5B	TL1004	B	C	3C
R4201	A	C	2B	R6113	A	C	5B	TL1005	B	C	3C
R4202	A	C	2B	R6114	A	C	4B	TL1006	B	C	3C
R4203	A	C	1B	R6115	A	C	4B	TL1401	A	C	3A
R4204	A	C	2B	R6116	A	C	5B	TL1402	A	C	3A
R4205	A	C	1C	R6117	A	C	4B	TL1403	A	C	3A
R4206	A	C	2C	R6118	A	C	4B	TL1404	A	C	3A
R4207	A	C	2C	R6123	A	C	4C	TL1406	A	C	3B
R4208	A	C	2C	R6124	A	C	4B	TL1407	A	C	4B
R4301	B	C	2C	R6201	A	C	5B	TL1408	A	C	3B
R4303	B	C	3C	R6202	A	C	5B	TL1409	A	C	3B
R4304	B	C	3C	R6203	A	C	5B	TL1410	A	C	3B
R4305	B	C	3C	R6204	A	C	4B	TL1411	A	C	3B
R4306	B	C	3C	R6205	A	C	4B	TL1412	A	C	3A
R4307	B	C	2C	R6206	A	C	4B	TL1413	A	C	3A
R4308	B	C	2C	R6207	A	C	4B	TL1414	A	C	3B
R4309	B	C	2C	R6208	A	C	5B	TL1415	A	C	3B
R4310	B	C	2C	R6209	A	C	5B	TL1416	A	C	4B
R4311	B	C	2C	R6210	A	C	5B	TL3001	A	C	3B
R4312	B	C	2C	R6211	A	C	5B	TL3002	B	C	5C
R4313	B	C	2C	R6212	A	C	5B	TL3004	A	C	3B
R4314	B	C	2C	R6213	B	C	4A	TL3005	B	C	5C
R4315	B	C	2C	R6214	B	C	4A	TL3501	A	C	3B
R4316	B	C	2C	R6215	B	C	4A	TL4201	A	C	2B
R4317	B	C	2C	R6216	B	C	4A	TL4202	A	C	1B
R4318	B	C	2C	R6219	A	C	5B	TL4203	A	C	1B
R4319	B	C	2C	R6220	A	C	5B	TL4301	B	C	2C
R4320	B	C	2C	R6221	A	C	5B	TL4302	B	C	3C
R4321	B	C	2C	R6223	A	C	5B	TL4303	B	C	3C
R4322	B	C	2C	R6224	A	C	4B	TL4304	B	C	2B
R4323	B	C	2C	R6225	A	C	5B	TL4305	B	C	3C
R4324	B	C	2C	R6226	A	C	5B	TL4306	B	C	3C
R4325	B	C	2B	R6227	A	C	5B	TL4307	B	C	3C
R4326	B	C	2C	R6228	A	C	5B	TL4308	B	C	3C
R4327	B	C	2C	R6229	A	C	5B	TL4309	B	C	3C
R4328	B	C	2C	R6230	A	C	5B	TL4310	B	C	3C
R4329	B	C	2C	R6231	B	C	5A	TL4311	B	C	3C
R4330	B	C	2C	R6232	B	C	5A	TL4312	B	C	2C
R4331	B	C	2B	R6233	B	C	4A	TL4313	B	C	3C
R4332	B	C	2C	R6234	B	C	4A	TL4314	B	C	2B
R4333	B	C	3C	R6235	B	C	4A	TL4315	B	C	3C
R4334	B	C	3C	R6236	B	C	4A	TL4316	B	C	3C
R4335	B	C	3C	R6237	B	C	4A	TL4317	B	C	3C
R4336	B	C	3C	R6238	B	C	4A	TL4318	B	C	3C
R4338	B	C	2B	R6239	B	C	4A	TL4405	B	C	2C
R4339	B	C	3C	R6240	B	C	4A	TL5501	A	C	1C
R4340	B	C	2C	R6241	B	C	4A	TL5502	A	C	1C
R4341	B	C	3C	R6242	B	C	4A	TL5503	A	C	1C
R4342	B	C	2C	R6243	B	C	4A	TL5504	A	C	1C
R4343	B	C	2C	R6247	A	C	5B	TL6000	A	C	5A
R4344	B	C	2C	R6249	A	C	5B	TL6001	A	C	4A
R4345	B	C	2D	R6251	B	C	4B	TL6003	A	C	5A
R4346	B	C	1B	R6253	B	C	5A	TL6007	A	C	4A
R4347	B	C	2C	R6255	B	C	5A	TL6012	A	C	4A
R4348	B	C	2C	R6257	B	C	5A	TL6015	A	C	4A
R4349	B	C	2C	R6701	A	C	5B	TL6018	A	C	4A
R4350	B	C	2C	R6702	A	C	5B	TL6048	A	C	5A
R4351	B	C	2C	R6703	A	C	5B	TL6150	A	C	4A
R5501	A	C	1C	R6712	B	C	5B	TL6301	A	D	4A
R5503	A	C	1C	R6713	B	C	5B	TM1	A	C	1A
R5504	A	C	1C	R7001	A	C	3A	TM2	A	C	5D
R5505	A	C	1C	R7002	A	C	3A	X1001	B	C	4C
R5506	A	C	1C	R7003	A	C	3A	X1002	A	C	2C
R5507	A	C	1C	R7004	A	C	3A	X3002	B	C	5D
R5509	A	C	1C	RA1001	B	C	4D	X5501	A	C	1C
R5510	A	C	1C	RA1002	B	C	4D				
R5511	A	C	1C	RA1003	B	C	4D				
R5512	A	C	1C	RA1004	B	C	4D				
R5513	A	C	1C	RA1005	B	C	4B				
R5514	A	C	1C	RA1006	B	C	4B				
R5515	A	C	1C	RA1007	B	C	3C				
R5516	A	C	1C	RA1008	B	C	4B				
R6001	A	C	4B	RA1009	B	C	4B				

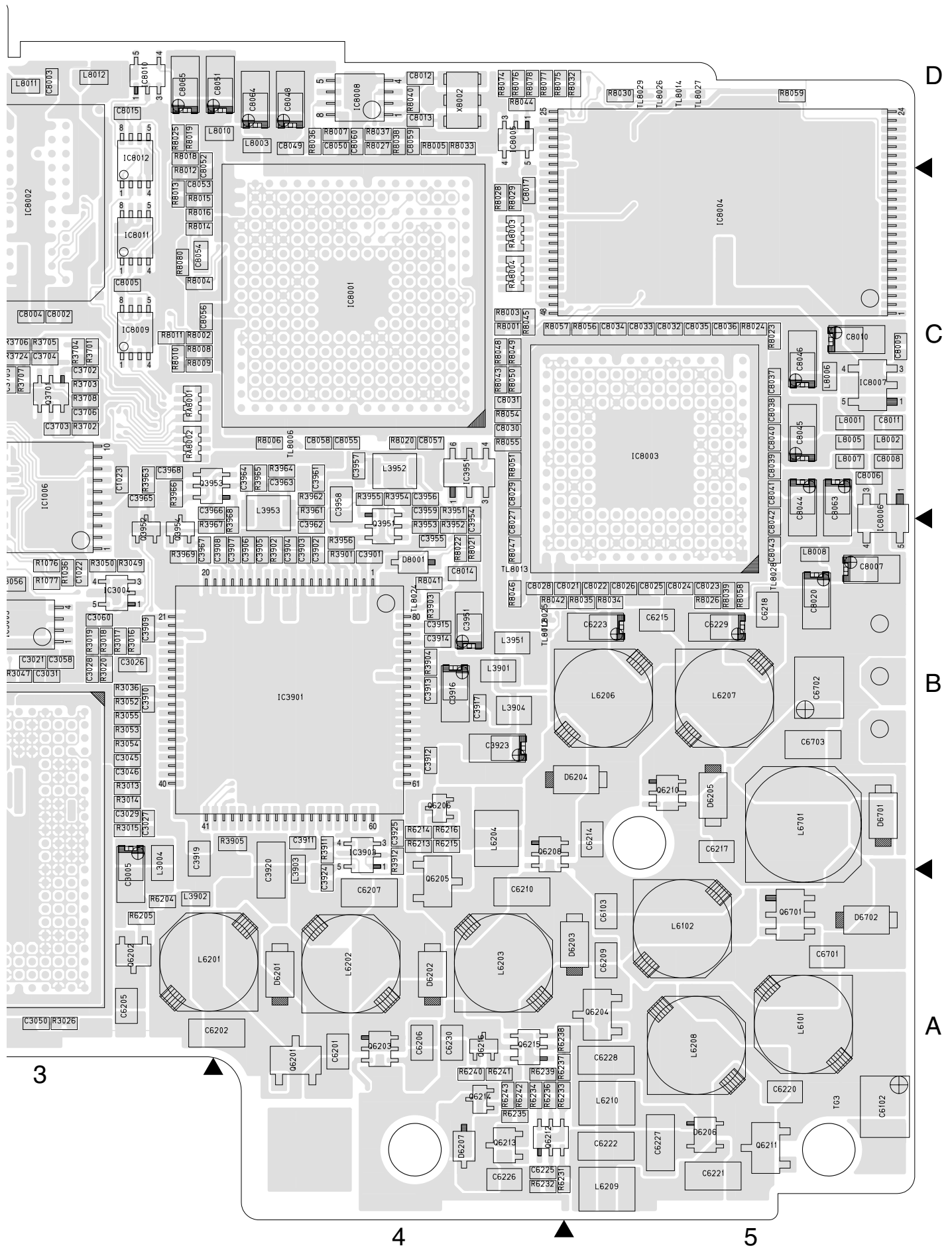
COMPONENT SIDE(A)



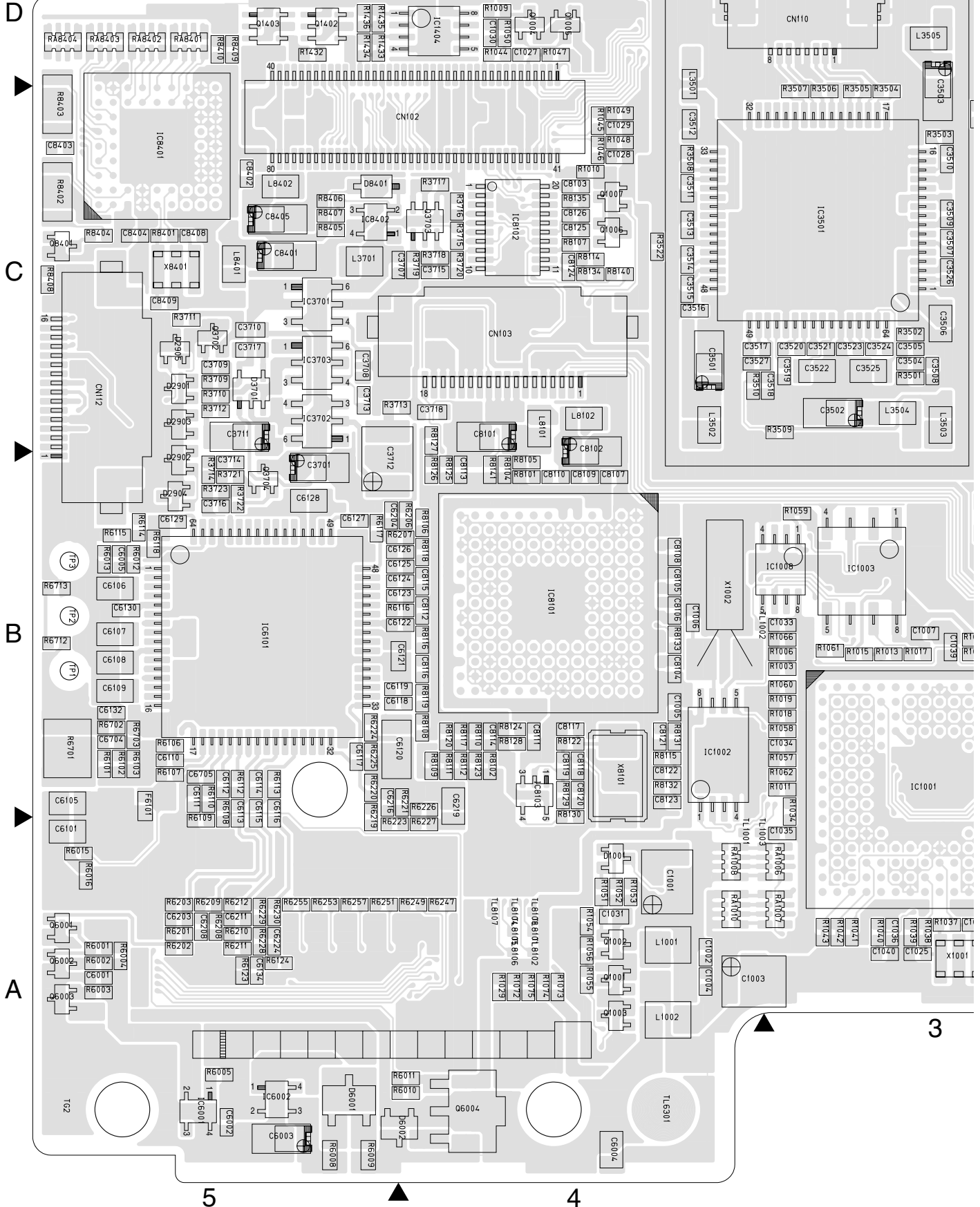
01 MAIN PWB
YB10318-01-02



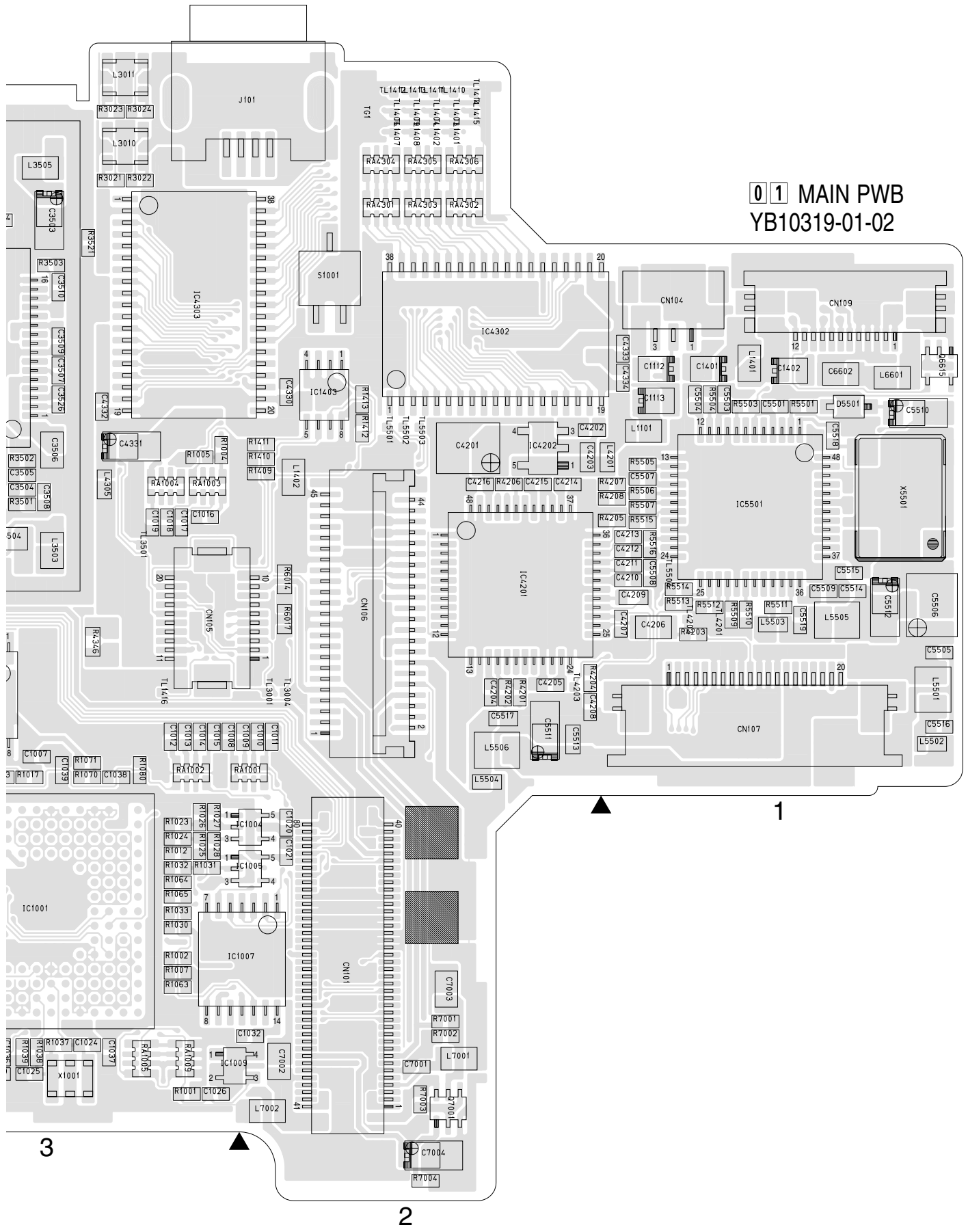
2



COMPONENT SIDE(A)



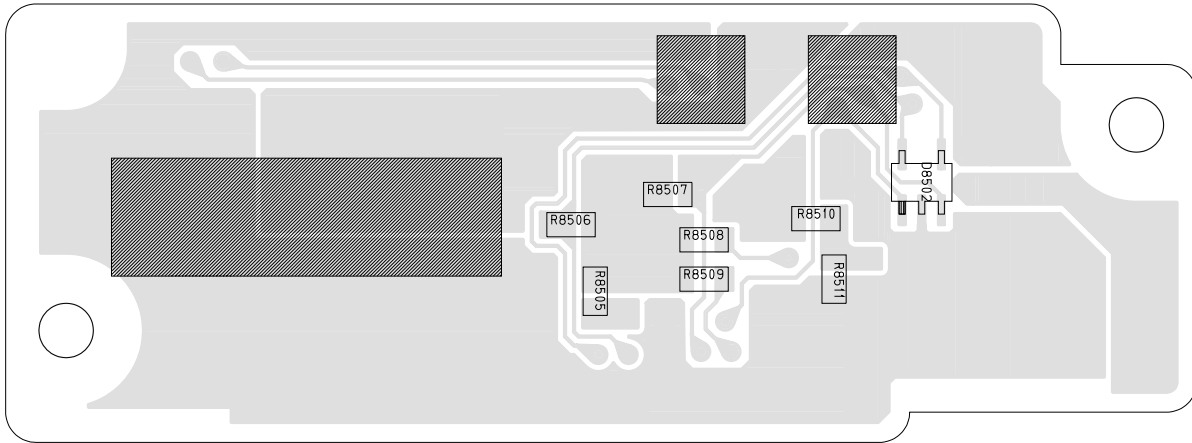
01 MAIN PWB
YB10319-01-02



4.7 JUNCTION CIRCUIT BOARD

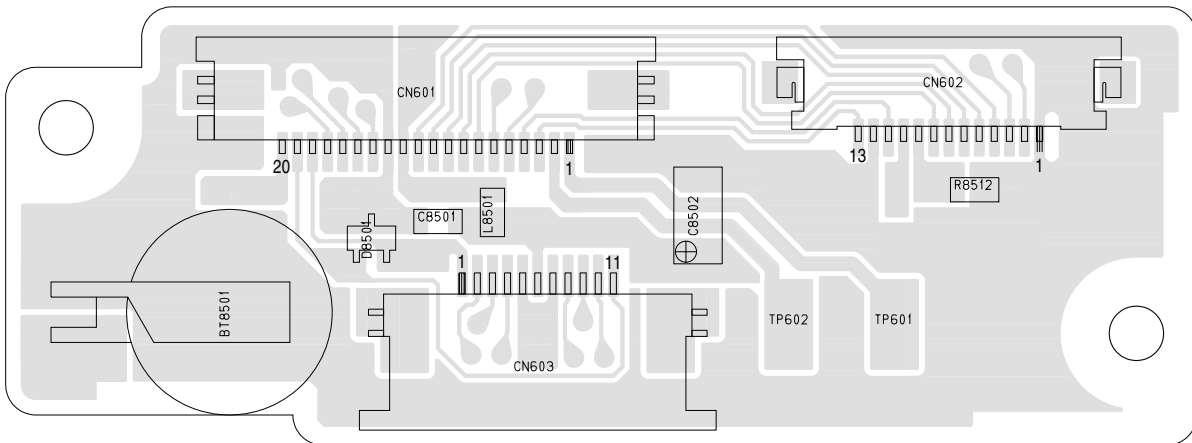
06 JUNCTION PWB
YB10323-01-02

FOIL SIDE(B)



06 JUNCTION PWB
YB10323-01-02

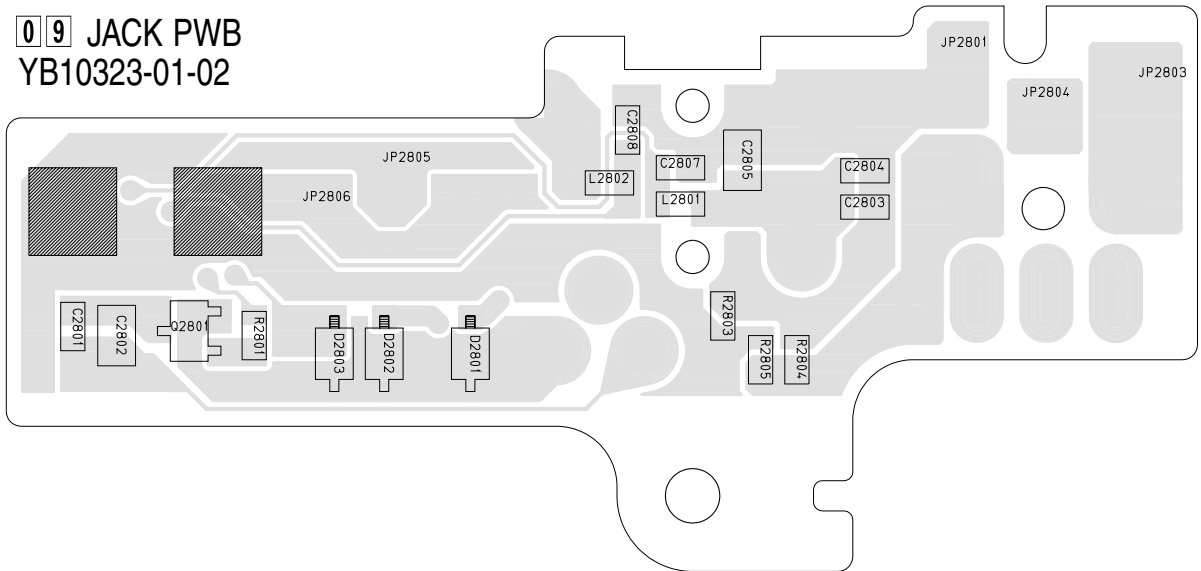
COMPONENT SIDE(A)



4.8 JACK CIRCUIT BOARD

FOIL SIDE(B)

09 JACK PWB
YB10323-01-02



COMPONENT SIDE(A)

09 JACK PWB
YB10323-01-02

